

# 605

INDEX NO.

## OVERGROUND HYDRANT BREAKABLE DN80 SINGLE CLOSING



### APPLICATION

Waterworks and fire-fighting installations.

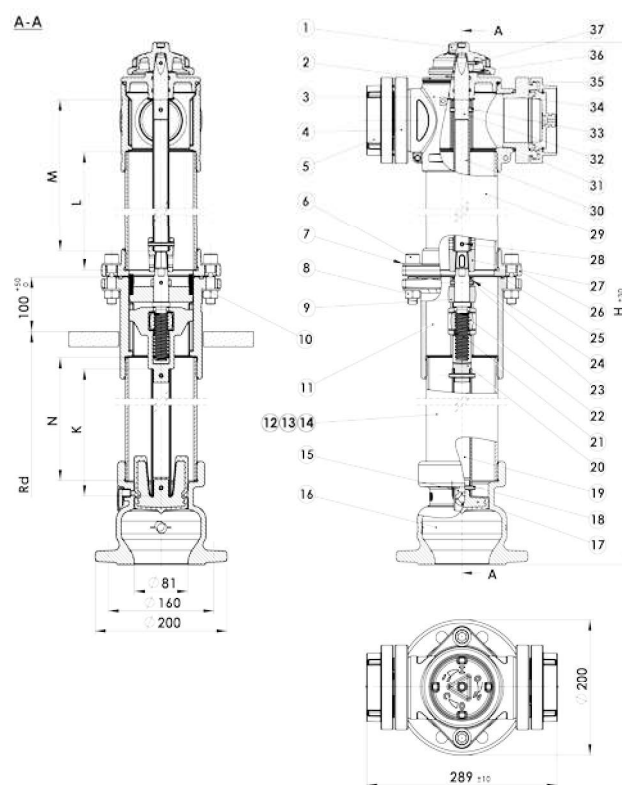
### DESIGN FEATURES

- head, base - ductile iron EN GJS-500-7
- column:
  - 605A - carbon steel S235JR
  - 605B - stainless steel (0H18N9 / AISI 304 / 1.4301)
  - 605C - ductile iron (EN GJS-500-7 / 5.3200 / EN JS1030)
  - 605D - carbon steel S235JR hot dip galv.
- rolled stem made of stainless steel (2H13, AISI 420, 1.4021)
- protection against breaking
- stem seal - o-ring
- self - draining when fully closed
- rod:
  - column A, C, D - constructional steel with anti-corrosive coating or stainless steel
  - column B - stainless steel
- special A2 bolt at the breaking point
- single piston closing system
- closing piston - ductile iron, fully vulcanised with EPDM
- internal elements may be replaced without the need to dig the hydrant out
- corrosion protection:
  - external - polyester RAL3000, min. 250 µm, UV resistant
  - internal - epoxy coating approved for contact with drinking water
- optionally - brass bushing at piston working location

### TECHNICAL DATA / STANDARDS

- design, requirements, test methods, application acc. PN-EN 14339, PN-EN 1074-6
- material acc. PN-EN 1563, PN-79/H-74244, PN-EN 10088-1
- flange PN16 acc. PN-EN 1092-2
- base B75 acc. PN-M-51038
- operating wrench acc. PN-63/M-74085, DIN 3223

No.	Part	Material	Standard
1	Operating nut	EN GJS-500-7	PN-EN 1563
2	Cover	EN GJS-500-7	PN-EN 1563
3	Head	EN GJS-500-7	PN-EN 1563
4	Base 75	Ak-11 / Aluminium	PN-91/M-51038
5	Coupling cover 75	Ak-11 / Aluminium	PN-91/M-51024
6	Special bolt	A2	PN-EN ISO 4762
7	Washer	A2	PN-EN ISO 7089
8	Nut	A2	PN-EN ISO 4032
9	Lock	EN GJS-500-7	PN-EN 1563
10	Pin	Spring steel	PN-EN ISO 8752
11	Bottom flange DN80	EN GJS-500-7	PN-EN 1563
12, 13, 14	Underground break-away column	S235JR / A2 / EN GJS-500-7 / S235JR hot dip galv.	PN-79/H-74244 PN-EN 10088-1 PN-EN 1563
15	Drainage plug	PE	PN-89/C-89286
16	Base	EN GJS-500-7	PN-EN 1563
17	Closing piston DN80	EN GJS-500-7 + EPDM	PN-EN 1563 PN-EN 681-1
18	Pin	Spring steel	PN-EN ISO 8752
19	Bottom rod	S235JR / Zn5 / A2	PN-EN 10219-2 PN-EN 10088-1
20	Slider DN80	EN GJS-500-7	PN-EN 1563
21	Bolt Tr	1.4021	PN-EN 10088-1
22	Nut Tr	CW617N	PN-EN 12164
23	Pin	1.4021	PN-EN ISO 8752
24	Distance bushing	1.4021 / 2H13 / AISI 420	PN-EN 10219
25	O-ring	EPDM	PN-EN 681-1
26	Top breakaway flange	EN GJS-500-7	PN-EN 1563
27	Base	EN GJS-500-7	PN-EN 1563
28	Pin	Spring steel	PN-EN ISO 8752
29	Overground column	S235JR / A2 / EN GJS-500-7 / S235JR hot dip galv.	PN-79/H-74244 PN-EN 10088-1 PN-EN 1563
30	Rod	S235JR / Zn5 / A2	PN-EN 10219-2 PN-EN 10088-1
31	O-ring	EPDM	PN-EN 681-1
32	Top end	1.4021 / 2H13 / AISI 420	PN-EN 10088-1
33	Pin	Spring steel	PN-EN ISO 8752
34	O-ring	EPDM	PN-EN 681-1
35	O-ring	EPDM	PN-EN 681-1
36	Washer	0H18N9 / 1.4301 / AISI 304	PN-EN 10088-1
37	Pin	Spring steel	PN-EN ISO 8752



DN	Height H [mm]	Installation depth Rd [mm]	Weight [kg]
80	1950	1000	42,3
80	2150	1250	44,8
80	2350	1500	47,3