

# 707

INDEX NO.

## DISMANTLING JOINT WM4



### APPLICATION

Intended for pipeline length adjustment, when assembling and disassembling fittings, and alleviation of piping stress compensation for movement. Waterworks, wastewater and other systems for liquids chemically neutral.

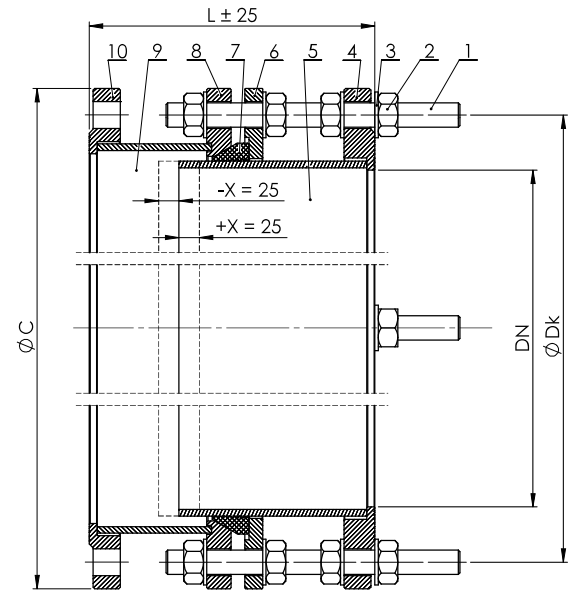
### DESIGN FEATURES

- diameter range DN250-2000
- adjustment range:
  - standard  $\pm 25$  mm
  - optional  $\pm 50$  mm
- corrosion protection:
  - epoxy coating
  - optional: hot-dip galvanized
- EPDM gasket for potable water or NBR gasket for wastewater
- threaded galvanized pins, optional: hot-dip galvanized, stainless steel, acidresistant steel
- possibility to design and produce a joint according to individual customer needs: nonstandard height, made of different materials, e.g. stainless steel
- four-flange solution with a sealing flange

### TECHNICAL DATA / STANDARDS

- material acc. PN-EN 10020
- seal:
  - NBR: PN-EN 681-1
  - EPDM: WRAS, BS 6920-2, ACS
- flange drilled acc. PN-EN 1092
- nominal pressure:
  - PN10: DN250-2000
  - PN16: DN250-1200
- temperature range:
  - EPDM:  $-10^{\circ}\text{C}$  /  $+60^{\circ}\text{C}$
  - NBR:  $-20^{\circ}\text{C}$  /  $+80^{\circ}\text{C}$

No.	Name	Material	Standard
1	Threaded pin	S235JR / Zn5 / A2 / A4	DIN 975
2	Nut	S235JR / Zn5 / A2 / A4	PN-EN ISO 4032
3	Washer	S235JR / Zn5 / A2 / A4	PN-EN ISO 7089
4	Connection flange I	S235JR / 0H18N9 / 0H17N12M2	PN-EN 1092
5	Body I	S235JR / 0H18N9 / 0H17N12M2	PN-EN 10020
6	Clamping flange I	S235JR / 0H18N9 / 0H17N12M2	PN-EN 10020
7	Gasket	EPDM / NBR	PN-EN 681
8	Clamping flange II	S235JR / 0H18N9 / 0H17N12M2	PN-EN 10020
9	Body II	S235JR / 0H18N9 / 0H17N12M2	PN-EN 10020
10	Connection flange II	S235JR / 0H18N9 / 0H17N12M2	PN-EN 1092



DN	Length* L [mm]		Outer flange diameter ØC [mm]		Effective diameter ØDk [mm]		Number of ports n × Ød [mm]		Threaded pin		Number of threaded pins		≈ Weight [kg]	
	PN10 / PN16	PN10 / PN16	PN10	PN16	PN10	PN16	PN10	PN16	PN10	PN16	PN10	PN16	PN10	PN16
250	250	300	395	405	350	355	12x22	12x26	M 20	M 24	4		92	129
300	255	305	445	460	400	410	12x22	12x26	M 20	M 24	4		100	140
350	255	305	505	520	460	470	16x22	16x26	M 20	M 24	4		103	144
400	260	315	565	580	515	525	16x26	16x30	M 24	M27	4		107	150
450	280	340	615	640	565	585	20x26	20x30	M 24	M 27	4		113	158
500	300	350	670	715	620	650	20x26	20x33	M 24	M 30	4		148	207
600	300	350	780	840	725	770	20x30	20x36	M27	M 33	4		183	256
700	300	380	895	910	840	840	24x30	24x36	M 27	M 33	4		218	305
800	315	385	1015	1025	950	950	24x33	24x39	M 30	M 36	4		315	441
900	330	390	1115	1125	1050	1050	28x33	28x39	M 30	M 36	7		392	549
1000	330	390	1230	1255	1160	1170	28x36	28x42	M 33	M 39	7		425	595
1200	370	420	1455	1485	1380	1390	32x39	32x48	M 36	M 45	8		750	1050

\* for the adjustment range  $\pm 25$  mm

**Note:** Joints above DN1200 are available per customer request.