

812

INDEX NO.

THREADED FLANGE

APPLICATION

Waterworks and wastewater installations. Intended for connecting pipes or devices with an external thread with flange fittings.

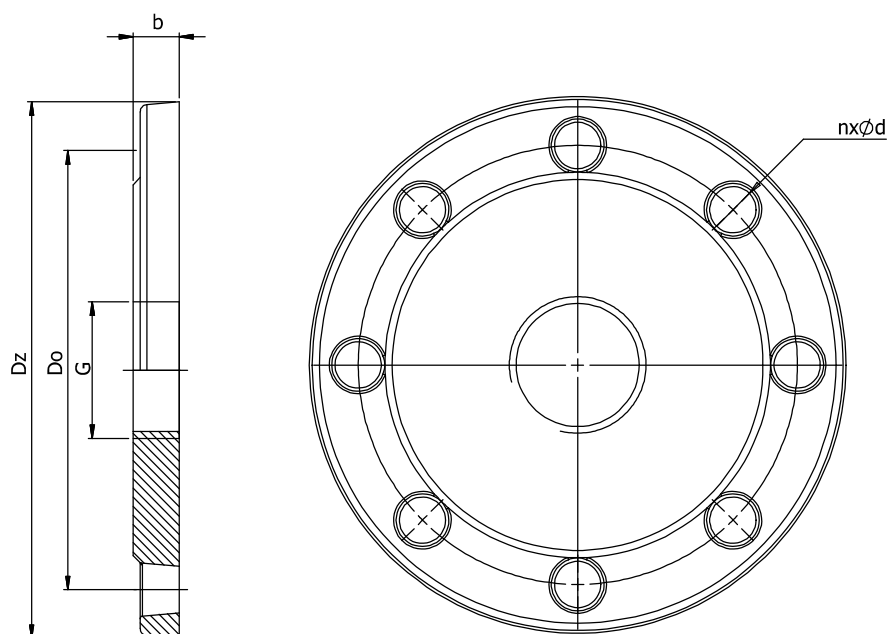
DESIGN FEATURES

- diameter range DN50-DN150
- body - ductile iron EN GJS-500-7
- milled grooves in the face of the flange
- anticorrosion coating - epoxy RAL5005, min. 250 µm

TECHNICAL DATA / STANDARDS

- material acc. PN-EN 1563
- flange connection acc. PN-EN 1092-2 - PN10/PN16
- threaded connection acc. PN-EN ISO 228-1
- temperature range: 0°C / +50°C





DN	Dz [mm]	Do [mm]	do [mm]	n [mm]	b [mm]	Weight [kg]
50	165	125	19	4	16	2,1
80	200	160	19	8	16	3,0
100	220	180	19	8	16	3,8
150	285	240	19	8	16	6,6

DN	Threaded outlet					
	1" [~25mm]	1 1/4" [~32mm]	1 1/2" [~40mm]	2" [~50mm]	2 1/2" [~65mm]	3" [~80mm]
50	x	x	x	x	-	-
80	x	x	x	x	x	x
100	x	x	x	x	x	x
150	x	x	x	x	x	x